

by James Valcq and Fred Alley

Directed by Jay Manley Music Direction by Nick Brown



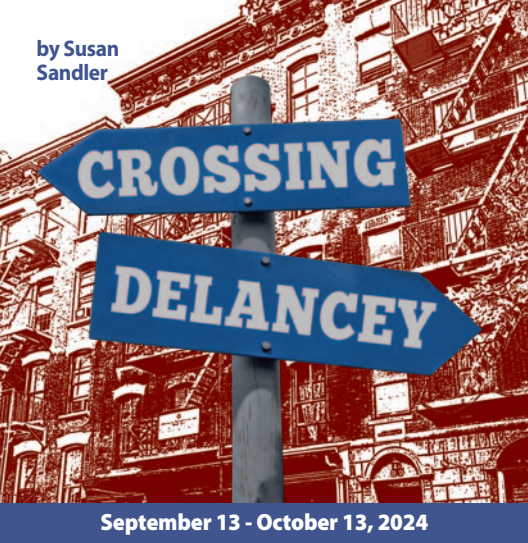
January 24 - February 23, 2025



TICKETS [RossValleyPlayers.com](http://RossValleyPlayers.com) | 415-456-9555

Design: Mark Shepard

by Susan Sandler



September 13 - October 13, 2024

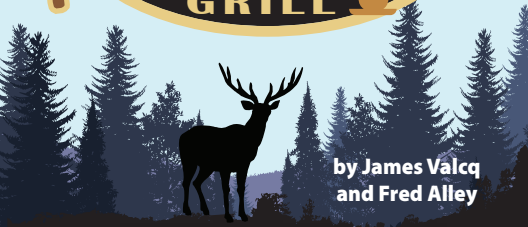
Plithe Spirit

by Noel Coward



November 15 - December 15, 2024

THE Spitfire GRILL



by James Valcq and Fred Alley

January 24 - February 23, 2025

Book and Lyrics by Fred Raker and Bruce Tallerman  
Music by Bruce Tallerman

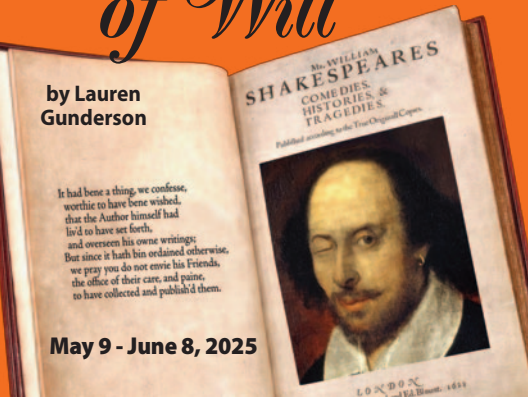


A New Musical Comedy

March 21 - April 6, 2025

The Book of Will

by Lauren Gunderson



May 9 - June 8, 2025

PLEASE JOIN US FOR OUR 95th SEASON



The Barn Theater at Marin Art & Garden Center  
Sir Francis Drake Blvd.  
at Lagunitas, Ross

DESIGN: MARK SHEPARD

## From the Executive Producer

In *Road Diary*, the 2024 documentary on Bruce Springsteen and The E Street Band, Bruce demands that he and his band be “as alive as possible on stage” for their fans. Aliveness on stage is key to the delight of live theater, including our production of *The Spitfire Grill*.

Being alive on stage begins with the physical work the actors do to get their bodies and voices ready to perform; it continues with the focus of the stage managers and assistant stage managers on the cues in the show; and culminates as the audience engages, moment by moment, with all the elements of the production—set, costumes, lights, sound, props, singing and acting—as the play unfolds. Together we feel alive like no other communal experience. On top of that, we add live music, and the experience just gets better!

Thank you for being here with us. We strive to make Ross Valley Players’ Barn Theater the most delightful, comfortable, affordable theater in the San Francisco Bay Area—a home for artists and audiences alike. We hope that your experience with *The Spitfire Grill* will inspire you to bring your family and friends, become a subscriber, and make RVP your theater home.

Welcome to The Barn!  
Steve Price



RVP GRATEFULLY ACKNOWLEDGES OUR SUPPORTERS



### Ross Valley Players Board of Directors

Allan Casalou, *President* • Steve Price, *Vice President, Executive Producer*  
Glenn Koorhan, *Treasurer* • Ellen Goldman, *Secretary*  
Stephanie Ahlberg, Michael Cohen, Mark Friedlander, Maureen Kalbus,  
Dee Kordek, Lynn Lohr, Vic Revenko, Alex Ross and Carol Winograd

# The Spitfire Grill by James Valcq & Fred Alley

Place and Time: Rural Wisconsin, February to October

## CAST

(In order of appearance)

Percy Talbott Kyra Lynn Kozlenko\*  
Sheriff Joe Sutter Kyle Stoner  
Hannah Ferguson Kelly Ground\*  
Caleb Thorpe Brad Parks  
Effy Krayneck Jane Harrington  
Shelby Thorpe Julianne Bretan  
The Visitor Bradley Markwick

## THE BAND

Violin Nina Han  
Guitar Evan Ceremony  
Keyboard Nick Brown

## PRODUCTION TEAM

Director Jay Manley  
Musical Director Nick Brown  
Producer Steve Price  
Stage Manager Dianne Harrison  
Assistant Stage Manager David Smith  
Assistant Stage Manager Bradley Markwick  
Set Design Ron Krempetz  
Master Builder Michael Walraven  
Properties Designer / Scenic Painter Dhyanis  
Lighting Design Michele Samuels  
Costume Design Valera Coble  
Sound Design Bruce Vieira  
Light Board Operator Dianne Harrison  
Dialect Coach Kimily Conkle  
Percy Understudy Claire Houghton Renoe  
Joe / Caleb Understudy Justin Hernandez  
Hannah / Shelby / Effy Understudy Kayla Gold  
Photographer Robin Jackson  
Graphic Design Mark Shepard  
Program Consultants Suzie Hughes and Nancy Wilson  
Volunteer Coordinator Eleanor Prugh  
Web Manager Andy Wilson  
Lobby Flowers and Décor Maureen Kalbus

**Special Thanks:** Mountain Play, Frank Sarubbi, Ron Talbot,  
Simon Eves and Marilyn Ibdebski

\*Appears through the courtesy of Actors' Equity Association, the Union of Professional Actors and Stage Managers in the United States. *The Spitfire Grill* is presented by special arrangement with Samuel French, Inc., a Concord Theatricals Company



THE HARBOR POINT CHARITABLE FOUNDATION  
*Enhancing the quality of life for adults and children in  
need in the San Francisco Bay Area since 2005.*

## OUR BENEFICIARIES (PARTIAL LIST)



TO CELEBRATE LIFE  
BREAST CANCER FOUNDATION



[www.hpcfgiving.org](http://www.hpcfgiving.org)

# Director's Notes

That rarity - an intimate musical, *The Spitfire Grill*, was an off-Broadway success twenty-five years ago. I was unfamiliar with it when RVP producer Steve Price proposed it to me. I was immediately touched and deeply moved by its themes of forgiveness—of others and perhaps more importantly, oneself—redemption, and the possibility of new beginnings. To my mind, these are times in which these qualities are in scarce supply, so that makes *The Spitfire Grill* especially relevant.

Percy, our central figure, wounded and aching for a fresh start, sets off for Gilead, a tiny, failing town. Her presence breathes new life into it and the six inhabitants we



come to know. There isn't a lot of plot. *The Spitfire Grill* is more about its characters' interactions and their growth as they come to better understand and accept themselves and one another.

The music, appropriately, is a mix of country and folk, as the denizens of Gilead express their heartaches, longings and dreams. We ride with them on their musical journey, as they

find new meaning and purpose in their lives.

I hope you fall for *The Spitfire Grill*, as I have. Our cast has become a real "Gilead family," as our wonderful actors have inhabited these seemingly ordinary, yet spectacularly complex characters.

And one more thing: we are living in a perilous time for live theatre. Sadly, if COVID taught anything, it is that it is easier to sit at home watching Netflix than taking the trouble to attend a live play. Live theatre, and community theatre particularly, have taken a beating, with many long-time companies folding. Your presence here suggests that you value live theatre, so as you consider your charitable giving, please place the arts high on your list. And if you enjoy our show, tell your friends!

Thank you for being here, and welcome to Gilead and *The Spitfire Grill*.

## Director's Bio

**Jay Manley** (Director) returns to Ross Valley Players where he helmed last season's Sarah Bernhardt bio-musical, *The Divine Sarah*. Other RVP "New Works" productions include

*The Swiss Family Robinson*, *Surprise Party*, and the Julia Morgan bio-drama, *Arches, Balance and Light*. For Marin's Mountain Play Association, he directed their centennial production of *The Sound of Music*, followed by *West Side Story*, *Beauty and the Beast*, *Mamma Mia*, *Grease* and *Hello, Dolly!* In the East Bay, Jay directed last summer's *The Imaginary Invalid* for Actors Ensemble. Jay founded Foothill Music Theatre in Los Altos Hills, earning a special citation from the Bay Area Theatre Critics Circle "...in recognition of his distinguished career..." Jay and husband Vance Martin lead popular theatre tours to New York, Ashland and other major cities through their company, New York Theatre Tour: [www.ny-theatretour.com](http://www.ny-theatretour.com)



Perotti and Carrade is a full-service tax, audit, and accounting firm, dedicated to providing our clients with professional, personalized services and guidance in a wide range of financial and business needs.



**P&C**  
**PEROTTI & CARRADE**  
Certified Public Accountants

415.461.8500 | [www.pc-cpas.com](http://www.pc-cpas.com)  
1 McInnis Parkway, Suite 200  
San Rafael, CA 94903

## SYNOPSIS OF SCENES AND MUSICAL NUMBERS

### Act I

Scene 1 - Taycheedah Prison; Trailways Bus; Town of Gilead, *The Spitfire Grill*, February

*Ring Around the Moon* - Percy

Scene 2 - The Grill, next morning  
*Something's Cooking at the Spitfire Grill* - The Company

Scene 3 - The Grill, a few days later  
*Into the Frying Pan* - Percy

Scene 4 - The Grill, morning, about a week later  
*When Hope Goes* - Shelby

Scene 5 - Town of Gilead, The Grill, February through April  
*Ice and Snow* - Caleb, Joe, Effy  
*The Colors of Paradise* - Percy, Shelby

Scene 6 - The Grill, three weeks later:  
*Digging Stone* - Caleb

Scene 7 - The Grill, morning, early May  
The Wide Woods - Joe, Percy

Scene 8 - The Grill, after closing, Mid-May  
*Forgotten Lullaby* - Hannah  
Scene 9 - The Grill, late May through June  
*Shoot the Moon* - Hannah and Company

### Act II

Scene 1 - The Grill, Town of Gilead, July through September  
*Come Alive Again* - Hannah and Company

Scene 2 - The Grill, night, October  
*Forest for the Trees* - Joe  
*Wild Bird* - Shelby

Scene 3 - The Grill, later that night  
Scene 4 - The Grill, The Woods, the next morning, just before dawn  
*Shine* - Percy

Scene 5 - The Grill, later that morning  
Scene 6 - The Grill, later that day  
*Way Back Home* - Hannah

Scene 7 - The Street, the Grill, several days later  
*Finale: The Colors of Paradise* - The Company

# THE CAST



**Julianne Bretan** (*Shelby Thorpe*) has been performing in the North Bay for 16 years, and this fantastic show is her first at Ross Valley Players. Favorite past roles include Carole King in *Beautiful: The Carole King Musical*, Marian Paroo in *The Music Man*, Hope Cladwell in *Urinetown*, Kate McGowan in *Titanic, the Musical*, Ariel in *Disney's The Little Mermaid* (Spreckels), Ilona in *She Loves Me* and Portia in *Something Rotten!* (6th St Playhouse), Johanna in *Sweeney Todd*, Natalie Goodman in *Next to Normal* (SFBATCC Award), Sally Brown in *You're a Good Man, Charlie Brown!*, and Cathy Hiatt in *The Last Five Years* (NTC/Theater-at-Large).



**Kelly Ground** (*Hannah Ferguson*) is thrilled to perform RVP after a lifetime spent in Marin. Bay Area audiences saw her recently as Frauline Schneider in *Cabaret* at Center Rep. National Tour: *Les Miserables* (Fantine), *An Inspector Calls*, *Menopause, The Musical* (Iowa Housewife). Regional: *Theatreworks in Iron John, Something Wicked This Way Comes* (Dust Witch) & *The Trouble with Doug* (Lynn). Jewel Theatre, *David Copperfield* (Aunt Betsy), San Diego Rep, San Jose Rep, Woodminster, Lawrence Welk Village Theatre, 42nd Street Moon, The Mountain Play, Sierra Repertory Theatre. Proud member of AEA, member of National Council since 2009. MFA-ACT



**Jane Harrington** (*Effy Krayneck*) worked in New York for years, appearing in *Man of La Mancha* with John Raitt, *Into the Woods* (Baker's Wife) and Off Broadway in *Company* (Joanne), among others. Bay Area: *A Little Night Music* at Sacramento Civic Light Opera, *Tune the Grand Up* at the Alcazar Theater with the great Jerry Herman, and *Sweeney Todd* (Beggar Woman) at Novato Theater Co. Most recently, she appeared as Cinderella's Stepmother in The Mountain Play's *Into the Woods*, *Spring Awakening* at Masquers Theater, and in Novato Theater's *The Addams Family* (Alice), *Noises Off* (Belinda) and *Nunsense* (Rev Mother). Thanks for coming to the theater, we are grateful you are here!



**Kyra Lynn Kozlenko** (*Percy Talbott*) is thrilled to join this beautiful team in *The Spitfire Grill*! She has performed at various venues across the U.S. and has been privileged to share the stage with celebrated artists such as Clive Davis, Wyclef Jean, and Anna Deavere Smith. Favorite credits include *Blast from the Past* (Suzie/Charleston's Spoleto Festival), *A Gentleman's Guide to Love and Murder* (Sibella/Davis Shakespeare Festival), and *110 in the Shade* (Snookie/42nd St. Moon/SFBATCCA best supporting actress nomination). Kyra is an AEA member, NYU/Tisch graduate, nature enthusiast, and former singing server at NYC's popular Ellen's Stardust Diner. Love galore to my family and incredible hubby!

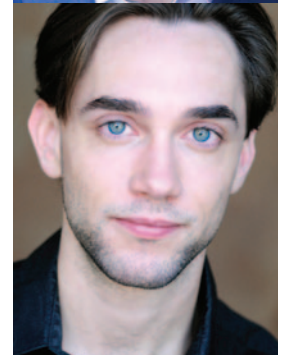
**Bradley Markwick** (*The Visitor*) is a Bay Area actor, singer, and multi-instrumentalist. Some of Bradley's recent performances include Antonio in College of Marin's production of *Twelfth Night* and Casper in Marin Contemporary Opera's staging of Judith Weir's *The Black Spider*. *The Spitfire Grill* marks Bradley's first production with Ross Valley Players. Bradley is eager and grateful for the opportunity to continue to use his craft to connect and inspire through the medium of theater.



**Brad Parks** (*Caleb Thorpe*) happily returns to the Ross Valley Players after appearing as the Prince and other characters in last year's *The Divine Sarah*. When not on stage, Brad is a prolific author and ghostwriter whose latest book, *The Boundaries We Cross*, was an Amazon Mystery/Thriller of the Month for November. The only writer to have won the Shamus, Nero, and Lefty Awards, three of crime fiction's most prestigious prizes, Brad's twelve novels have been translated into sixteen languages (for more, visit [bradparksbooks.com](http://bradparksbooks.com)). He lives in San Rafael with his wife and two children, who thankfully tolerate his continuing theater habit.



**Kyle Stoner** (*Sheriff Joe Sutter*) is reportedly glad to rectify the oversight of never having worked with RVP before. Previously: NCTC, last seen as Jon in *tick, tick...BOOM!* and Princeton/Rod in *Ave Q*. Kyle lives in Napa, and uses his extensive knowledge of herding cats to teach the 1% about wine. Regional: *Clue, Sweet* (Center REP); *David Copperfield* (Jewel Theater Co.); *Ultimate Xmas Show, Complete Works of William Shakespeare (abridged)* (The Reduced Shakespeare Co.); *D'Ysquith, Gentleman's Guide* (DSF); *Les Miserables, Macbeth* (Sierra Rep); *Jesus, Jesus Christ Superstar* (BAS); AlterTheatre; SF Shakespeare Festival; 42nd Street Moon. "None are free until all are free. RIP Aaron Bushnell. Long Live Luigi!"



## PRODUCTION SPONSOR

Tessera Trademark Screening is proud to support *The Spitfire Grill* and artistic excellence at Ross Valley Players.



## The Playwrights

**Fred Alley** (1962–2001) was an American musical theatre lyricist and librettist who died unexpectedly just as his work gained national recognition. His collaboration on the musical *The Spitfire Grill* with composer James Valcq won the American Academy of Arts and Letters' prestigious Richard Rodgers Production Award for 2001. Premiered at the

George Street Playhouse in New Jersey and produced Off-Broadway by Playwrights Horizons, it received Best Musical nominations from the Outer Critics Circle and Drama League, as well as two Drama Desk nominations. The cast album was released on Triangle Road Records.

Alley was the co-founder and artist-in-Residence at American Folklore Theatre (AFT) in Door County, Wisconsin, a populist theatre with a seasonal audience of 50,000 performing original musicals that further the knowledge and appreciation of the heritage of the United States with local and regional settings and themes. It was at AFT that Alley first collaborated with Valcq on a musical called *The Passage*. Also at AFT, Alley collaborated on more than 20 original shows with composer James Kaplan, director Jeffrey Herbst, co-founder Doc Heide, and frequent guest artists Paul Sills and James Maronek.

Alley was the librettist and lyricist of *Guys on Ice*, *Lumberjacks in Love*, and *The Bachelors*, all of which began at AFT and set box office records in frequent productions at the Milwaukee Repertory Theater.



**Fred Alley and James Valcq**

**James Valcq** (born 1963 in Milwaukee, Wisconsin) is an American musical theatre composer, lyricist, and librettist, as well as an actor and arts administrator. He contributed to various theatrical works.

Off-Broadway, Valcq wrote the book, music, and lyrics and co-directed the production for *Zombies from The Beyond*, which opened in 1995.

Other New York credits include *Fallout Follies* at the York Theatre, *Songs I Never Sang For My Father* at the Village Theatre, and *The Last Leaf*, a collaboration with Mary Bracken Phillips. Regionally, Valcq composed an adaptation of the classic children's book *The Pancake King* commissioned by Milwaukee's Next Act Theatre, and *The Passage* (another collaboration with Fred Alley) at American Folklore Theatre in Wisconsin.

In addition to orchestrating his music, he has created orchestrations of classic musicals for regional theatres and opera companies. Valcq is also a conductor and musician, with Broadway credits including *Chicago*, *Flower Drum Song*, *Scarlet Pimpernel*, and *Cabaret*.

**RVP** is part of the Marin Art and Garden Center, which sits within the unceded ancestral homeland of the Coast Miwok people. RVP respects and honors past, present, and future generations of Miwok and their continued connection to this land. RVP is grateful for the opportunity to gather in this place and gives respect to its first inhabitants.



Thank you  
for contributing the  
great design of the  
new RVP Barn  
Theater lobby



**SDG**  
SCHEIBER DESIGN GROUP

SDG - Interior Design  
[www.scheiberdesign.com](http://www.scheiberdesign.com)

Billy Alexander, Design Principal and Owner  
[billy@scheiberdesign.com](mailto:billy@scheiberdesign.com)  
415-686-0523

# Backstage Bios

## Nick Brown

(Musical Director) is a San Rafael-based musical director, singer-songwriter, instrumentalist, producer and teacher who has loved theater since he was 10 years old.



A Marin native and 2021 graduate of CalArts, Nick has toured with regional bands, led his own groups as a frontman, produced five albums of original material, and since 2022, has found his way back to musical theater as a profession. Nick has served as musical director for shows at Novato Theater Company, College of Marin, Redwood and Archie Williams High Schools, and Marin Horizon School, and is thrilled to be working with Ross Valley Players.

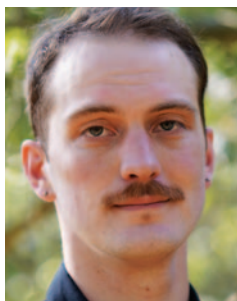
## Nina Han

(Musician) is a freelance violinist delighted to be playing her first show with Ross Valley Players. Recent favorite performances include *Anastasia* (Hillbarn), *Galileo* (Berkeley Repertory), *Once* (Hillbarn), *Legally Blonde* (Korsa), *Fiddler on the Roof* (Palo Alto Players), and *Sunday in the Park with George* (Korsa). In the Bay Area, Nina has served as concertmaster of the Cambrian Symphony, principal 2nd of the San Francisco Philharmonic, and concertmaster of the Bay Area Rainbow Symphony.



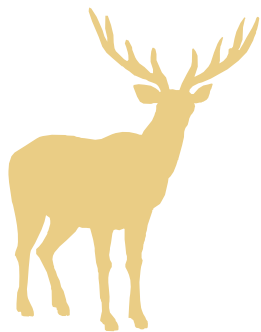
## Evan Ceremony

(Musician) is a guitarist and bassist based in the San Francisco Bay Area with over a decade of professional experience in both live and studio settings. He has played in multiple stage productions throughout the Bay Area including *Rent*, *Newsies*, *Footloose*, and others. Additionally he has also played and recorded for many different groups, artists, and songwriters all throughout California as well as in many other areas of the country.



## Kayla Gold

(Understudy) is honored to be on the team with this exceptional cast and crew. Recent roles include *Christine*, *The Black Spider*, with Contemporary Opera Marin, *Mother Abbess*, *Sound of Music*, and *Grandmama*, *The Addams Family*, (SFBATCC Nomination). An improv artist and songwriter, she's co-written and performed one-woman and duo cabaret acts, and currently performs with her husband in their Beatles to Bluegrass trio, *Thirsty Ground* ([thirstygroundband.com](http://thirstygroundband.com))



## Justin Hernandez

(Understudy) is a creator, witness and challenger of the arts. He has recently been in *Our Town* and *Pride and Prejudice*, the *Musical* at RVP. Graduate of SF State and the Actors Training Program at Solano in 2008 under the direction of George Maguire and Carla Spindt. Justin continues to pursue truth in all his characters and bring light to the hearts of audiences.



## Claire Houghton Renoe

(Understudy) is thrilled to be involved with *The Spitfire Grill*, her first show at Ross Valley Players. She recently graduated from the UCLA School of Theater, Film, and Television, where she studied acting and directing. Since returning home to Berkeley, Claire has been excited to explore Bay Area theater— performing at the Dickens Fair, assistant directing at Korsa Musical Theater



Company, and directing *Shrek the Musical* at Albany High School. Claire is a lover of musical theater and folk music, and greatly enjoyed working on this show, which combines the two so beautifully. She hopes you enjoy!

**Dianne Harrison** (Stage Manager) has worked in stage management, sound/light board operations, and props design for many Bay Area theatre companies, including African-American Shakespeare Company (*Richard II*, *The Glass Menagerie*), Altarena Playhouse (*A Nice Family Gathering*, *The Birds*), Eye Zen Presents (*Sylvester: The Mighty Real*), Novato Theatre Company (*Noises Off*, *Nonsense*), PlayGround SF (*Monday Night* series, *Twisted Holiday* series), Ross Valley Players (*Silent Sky*, *Pride and Prejudice: The Musical*), Santa Rosa Junior College (*Beauty and the Beast*, *The Rocky Horror Show*), and Sonoma Arts Live (*Same Time*, *Next Year*, *Calendar Girls*). She has a Certificate in Stage Management and an AA in Theatre Arts from the SRJC, as well as a Certificate of Merit from the Kennedy Center's American College Theater Festival. Dianne is thrilled to be back at The Barn, and thanks her husband for his unwavering encouragement and support.



## OSHER LIFELONG LEARNING INSTITUTE

Marinites over 50 enjoy courses, lectures and discussion groups led by outstanding faculty year-round, both on Zoom and in-person at the beautiful Dominican campus in San Rafael.

Explore courses in art, current events, the economy, history, politics, jazz, opera, art history and much more.

Learn more at [dominican.edu/olli](http://dominican.edu/olli)

DOMINICAN UNIVERSITY  
of CALIFORNIA  
Osher Lifelong Learning Institute



# Backstage Bios

**Ronald E. Krempetz** (*Scenic Design*) has been a Bay Area set designer since 1967. Throughout his career, Ron has earned numerous awards for theatre, retail, and industrial theatrical design. In 2022, Ron retired from his position at the College of Marin as resident Set Designer and Instructor of Technical Theatre. Ron has been happy to work on many productions at Ross Valley Players since 1995, earning numerous acknowledgments for his work. This season, he is happy to return to work with RVP's many talented theatre folk on the productions of *Spitfire Grill* and *The Book of Will*. Ron resides in Petaluma with his wife, Diane. He is the proud PopPops of nine grandchildren who continue to inspire his inner child.

**Kimily Conkle** (*Dialect Coach*) has coached over 100 shows in the Bay Area for companies including TheatreWorks, Marin Theatre, San Jose Stage, Sierra Repertory

Theatre, CenterRep, Sacramento Theatre Company, The Mountain Play, Broadway by the Bay, City Lights Theatre, South Bay Musical Theatre, Foothill Music Theatre, and Stanford University. She was a Theatre Arts faculty member at Foothill College and received her training from the Royal Academy of Dramatic Art, American Conservatory Theater, and Pacific Conservatory of the Performing Arts. Kimily is a member of the Voice and Speech Trainers Association (VASTA), Actors' Equity (AEA), and holds a BS from Georgia Tech.

**Bruce Vieira** (*Sound Design*) has designed sound for many productions in Marin County over the past several years including, *The Bat* (SFBATCC nomination), *Vanya and Sonia and Masha and Spike*, and *Into the Woods* (SFBATCC nomination), all at the Novato Theater Company. At the Ross Valley Players he designed sound for *Chapter Two*, *The Miser* (which he also

# New Works

**Up Next, Opening March 21,  
Preview March 20**

Ross Valley Players New Works Presents



A musical about love, dreams,  
and really bad crowdfunding ideas

Book & Lyrics by Fred Raker & Bruce Tallerman, Music by Bruce Tallerman  
Directed by Gary Stanford, Jr.,  
Musical Direction by Kevin X. Dong



Fred Raker

Bruce Tallerman



Gary Stanford, Jr.

Kevin X. Dong



"We used to dance together before technology was all the rage. Now I've no idea who you are behind your Facebook page. You went digital and I stayed analog!"

**New Works Also Presents Sunday Night Readings  
of Three Plays by Local Playwrights, \$10**

**March 23, 7pm**  
**Prompted** by John Levine, Directed by Meryn MacDougall

**March 30, 7pm**  
**Domesticated** by Patrick Atkinson, Directed by Bruce Kaplan

**Tales of a Baby Dyke in a Smoking Jacket** by Robyn Brooks, Directed by Eileen Grady



**RVP NEW WORKS**

Tickets  
RossValleyPlayers.com  
415-456-9555  
Single Tickets on Sale Feb 26

Support the Marin Art and Garden Center and receive cool swag + other benefits!

**Tommy Breeze Hat**

**Magnet**

**Tote Bag**

**Picnic Blanket**

**Water Bottle**

**80 YEARS**

Become a Friend of the Garden Today at [maringarden.org/friends](http://maringarden.org/friends)



# Backstage Bios

directed), *Deathtrap* (SFBATCC nomination) and others. He has provided sound effects for *The Mountain Play* for the last six seasons. Bruce has also acted in the Mountain Play as Tevye in *Fiddler on the Roof*, Daddy Warbucks in *Annie* and The Cowardly Lion in *The Wizard of Oz*.

**Dhyanis** (*Scenic Artist and Properties Design*) was introduced to the Barn Theatre in 1986 and has served many roles here and at other Bay Area theatres, including Head Costumer and Designer, Scenic Artist, Choreographer and Prop Designer. She is currently assistant to the set designer at College of Marin. She designs and produces her own line of dance costumes and clothing, teaches belly dance and is a Grief Coach. Past credits at the Mountain Play include Costume Designer for *The King and I* (1987), *South Pacific* (1988), *Brigadoon*

(1989), and *Anything Goes* (1990). She also served as Scenic Artist on the Mountain up to and including *Beauty and the Beast* (2017). Awards for costuming include Bay Area Theatre Critics Circle (*Follies*, 1994), four Shellies (Contra Costa Civic Light Opera musicals) and a Solano College Award for *Elephant Man* (1995).

**Michele Samuels** (*Lighting Design*) is thrilled to be back at RVP to design *The Spitfire Grill*. She recently designed lights for College of Marin's (COM) *Snow Queen* and RVP's *The Divine Sarah*. Michele's theatre career began with Alvin Ailey Dance Theatre in New York. At COM, Michele has designed many shows, including *When We Were Young and Unafraid*, *The Firework Maker's Daughter*, *As You Like It*, *Antigone*, *Stories of Eva Luna*, and more. As Guest Artist in Lighting, she is working with the

students at CTE (Contemporary Theatre Ensemble at Tam High), assisting with their productions throughout the school year. Michele thanks her COM family for their support, and her "real" family for their patience.

**Valera Coble** (*Costume Design*) recently designed costumes for RVP's *The Book Club Play*, *Crossing Delancey* and *Blithe Spirit*. Company member with Berkeley-based Shotgun Players since 1999, nearly 50 Shotgun credits include *Macbeth*, *The Forest War*, *The Death of Meyerhold*, *The Watson Intelligence*, *Dry Land* and *Yerma*. Valera's work has also been seen at theaters, including Aurora Theatre Company, Magic Theatre, Center Repertory Company, San Francisco Playhouse, Crowded Fire, Town Hall Theatre and Word for Word. She has enjoyed instructing and mentoring design

students in many capacities, including the theater departments at Saint Mary's College, Orinda and Lick Wilmerding High School, SF and for the fellowship program at Shotgun Players.

**David Smith** (*Assistant Stage Manager*) came to the theatre a couple of years ago following retirement from business life - and he loves it. This is his fourth time working as assistant stage manager at RVP and he is excited to be working with Jay again as a part of this production.

**Michael Walraven** (*Master Set Builder*) is pleased to be back in the theatre. Michael has also performed on stage at RVP in *Pirates of Penzance* and *The Polynesian Lounge* and in the Mountain Play's *Sound of Music* and *Guys and Dolls*. Favorite roles include Tevye in *Fiddler on the Roof*, Boyd Bendix in *A Case of Libel*, Mr. Cladwell in *Urinetown*, Mr. Mushnik in *Little Shop of Horrors*, Jean in *Miss Julie* and Hogan in *Moon for the Misbegotten*. Michael is now performing weekends as the Count of Buena Vista at Buena Vista Winery.

## LOVE LETTERS



### Two Performances Only! Local Stars Shine in Benefit for RVP

James Earl Jones and Elizabeth Taylor. Ali McGraw and Ryan O'Neal. And now, RVP's own Alex Ross and Heather Shepardson. All have headlined *Love Letters*, by Pulitzer Prize-winning playwright, A.R. Gurney.

This special event includes a Bubbly & Sweets pre-show reception before Saturday, March 1, 7:30 pm and Sunday, March 2, 2:00 pm performances. Tickets are \$40 apiece with an additional \$3.80 booking fee per ticket.

Interpreting letters stretching from 1937-1985, Alex and Heather guide us through a "tender story of thwarted love."

**March 1 and 2. Tickets: [RossValleyPlayers.com](http://RossValleyPlayers.com), Questions call 415-308-4448**



## Join the Ross Valley Players!

Experienced or not, we'll train you. We're looking for great people for these great opportunities:

- Production Staff • Production Managers
- Set Designers • Costumes • Lighting Designers
- Sound Designers • Stage Managers • Lighting Operators
- Sound Operators • Theatre Operations
- House Managers • Box Office Personnel
- Concession Personnel • Property Designer

It's easy to join RVP:

- \* Talk to the House Manager of this performance
- \* Phone us: 415.456.9555



# 2024 Donors

Thank you to all our generous 2024 donors! The list of donors below is for donations received January 1, 2024 through December 31, 2024. Donations received during the calendar year 2025 will be acknowledged in the programs for performances in the 2025-2026 season. If we inadvertently made an error in your listing, please accept our apologies and let us know by contacting Ellen at: noscaasi@comcast.net or by leaving a message on 415-456-9555, ext. 3

## PHILANTHROPIST \$5000 +

Allan Casalou and Billy Lynam  
Robert Kaliski and Linda Nelson  
Alex and Tinka Ross  
Estate of Heather Preston  
Tricoastal Foundation

## ANGEL \$1000-\$4999

Kim Bromley and David Carson  
Jerry Cahill and Kathy King  
Steven De Hart and Sheldon Donig  
Julie D Dickson  
Cami Eichar  
Douglas and Jane Ferguson  
Sugar and Gus Filice  
Michael Fottrell  
Bruce and Eva Gibbs  
Ellen and Bob Goldman  
Dee A Kordek  
Lynn Lohr  
Jay Manley and Vance Martin  
William E. Baidio  
Victor Revenko  
Georgia F. Sagues  
Lori Viti and Christopher Timossi  
Nancy Wolcott  
Phyllis M Wright

## PRODUCER \$500-\$999

Stephanie and Tom Ahlberg  
Mary Jane Baird  
Greg Brockbank  
Ron Clyman and Francoise Mauray  
Drake Terrace  
Karen Fry

Robert Hall  
Joyce K. Kami  
Nicholas Kayhan  
Ronald Krempetz and Diane Judd  
Marguerite Leoni  
Lynn R. MacDonald  
Jennifer McGeorge  
Sean O'Brien  
Richard Roysse  
Diane and Ed Ryken  
Dorene and Robert Schiro  
Virginia Turner  
JoAnne Winter and Adrian Effenbaum

## DIRECTOR \$250-\$499

Harold and Virginia Anderson  
Jay R. Beasley Jr.  
George and Sheila Bertram  
Bruce and Janie Burtch  
Teta Collins  
Jill Connolly  
Arthur Davidson  
Lauri R. Flynn  
Mark and Carole Friedlander  
Judith Jaslow  
Russ and Kathy Ketron  
Glenn Koorhan  
Robert and Judith Leedy  
Kathleen and John Leones

Christopher A. Moffat  
Kay and Mark Noguchi  
Susan C. Peters  
Becky and Larry Reed  
Richard and Marilyn Riede  
Randolph and Carol Selig  
Steve and Judith Stromberg

Arlene and Irwin Taranto  
Alexander Vollmer  
Patrick Walsh and Scott Binnings  
Nancy and John Zeravich

## STAGE MANAGER \$100-\$249

Laraine Allen  
Jerry and Susan Angel  
Kirk and Joan Beales  
Peter and Helene Bence  
Richard Bottega  
Dorothy L Breiner  
Sally Buehler  
Sharon Burns  
Karen J Carmody  
Larry Clinton  
Tamar Cohn  
Claudia Cole and Carlos Brown  
Michael Cole  
Pam Crane  
Christina B. Crow  
Adrianna Dinianian  
Stephanie Douglass  
Mary Ann and Malcolm Dunlap  
Mitchell K. Field  
Laszlo and Rosemarie Folk  
Julie S Frank  
Mervin and Gail Giacomini  
Burt Greenspan  
Kevin Hagerty and Candace del Pontillo  
David Hanchette  
Carol-Joy Harris and Bill Davis  
Yvonne Herico  
Richard and Clifford Sennello  
Marilyn Izdebski  
Charlotte Jacobs  
Elizabeth Jameson

Maureen and Ralph Kalbus  
Barbara Leopold  
Victor and Ellen Levin  
Mary-Ann Milford  
Joseph McDonald  
William McNicholas  
Mary Mizroch  
Emiko Moore  
George and Claire Nadeau  
Neil and Joanne Nevesny  
Paula Olney  
Tom and Jan Perry  
Zdenka Pisarev  
Pamela Rand  
Thomas Reilly  
Jennifer Reimer  
Jillian Robinson  
Mary Ann Rodgers  
Deborah Ruth  
Julie and Bill Ryan  
Maureen and Heinz Scheuenstuhl  
Jon Schmidt  
Terry Seligman  
Alice Shelton  
Cynthia Sima and George Brown  
Therese Stawowy  
Paul and Sandy Steinman  
Elizabeth Lyons Stone  
Jean Sward  
Cynthia Swift  
Ann Thomas  
Larry Van Note and Linda Bell  
Dennis Wulkan

## STAGE CREW Under \$100

Patricia Albo  
Keith and Holly Axtell  
Judy Baldassari  
Joan Beavin  
Ann Peckenpaugh Becker

Christina Bird  
Melinda Booth  
Jed Borghei  
Janet Braff  
Joan Braun  
Ted Bravos  
William McNicholas  
Steve Brown  
Sondra Card  
Alla Chesnokova  
Kathleen Clark  
Laura L Collins  
Eve Colloton  
Joan Corey  
Susan Creighton  
Travis Darcy  
Jane Z. Delahanty  
Donelle Delong  
Ruth Devivo  
Marcia DeZwarte  
Thomas Diettrich  
Dorrie Dodge  
Julie Durbin  
Larry Eggan  
Terry Epstein  
Angela Falcone  
Pam Feagles  
James Christopher Felchlin  
Eileen and Andrew Fisher  
Phyllis Galanis-Fedanzo  
Robert Garlick  
Laura Goff  
Gerry H Goldsholle  
Patricia Goodman  
Cynthia Greenberg  
Laurie Gregg  
Gregory Greunke  
Marijane Guy  
Katy Halbrook  
Thomas Harlan  
Karen Harrell  
Mark Hoffman  
Jen Horn  
Lauren Howard  
Laura E Jacobson  
Anne Johnston

Jane Carey Kahn  
Richard J. Kalish  
Amelia Kaplan  
Suzanne Karp  
Joan Kozlowski  
Warreneta Lane  
Gretchen Leavitt  
Sandra Levitan  
Nancy A Light  
Catherine Loudis  
Daniel Mardesich  
Joyce Martin  
Diane Mayers  
Charles and Claire McBride  
Tom McDonald  
Kalpana Mehta  
Melissa Meith  
Craig Merrilees  
Harriett Michael  
David Miller  
Judith Mirkin  
Daniel Morgenstern  
Phoebe Elinor Moyer  
Phillip Muller  
Mary M. Myers  
Diane Neuhaus  
Barbara Nielsen  
Julia L Noble  
Monica Norcia  
Karyn OMohundro  
Thomas Owen  
Thomas Painchaud  
Mary Papenfuss


Marcy Taylor Pattinson  
Lois and Hi Patton  
John Petrovsky  
Joy Phoenix  
Judith Rainin  
Carol Randall  
Tyler Risk  
Carole G. Rosvold  
Charles Runkel  
Ginny Sandell  
Jacqueline Schmidt  
Laura Sheehan-Barron  
Tom Short  
Vicki Sievers  
Judy K Simmons  
Diana W Singer  
Sandra Sloan  
Steve Sockolov  
Clara Solvason  
Jean Spaulding  
Marie Steckmest  
Burnett Tregoning  
Pauline Tomlinson  
Phyllis Toomire  
Lily Tsay  
Nora Turner  
Theresa Ulin  
Ann Vercoutere  
Carolyn Beach Welcome  
Sally Williams  
Tyler Ashton Yue  
Tauheed Zaman  
Rudy & Marcy Zavora

**MEMBERS**  
Peter Lowry  
Lynn Lohr  
Allan Casalou  
Amanda Weitman  
Alice Timberlake  
Lehmann  
Sally Secor  
Jean Marchant  
Susan Angel  
Jean Witmer  
Georgia Sagues  
Burt Greenspan  
Terry Seligman  
Gregory Greunke  
Ruth Moran  
Linda Susan Nelson  
Vic Revenko  
Elaine McKenna  
Steven Sumnick  
Linda Wraxall  
Karen Fry  
Richard and Marilyn Riede  
Stephanie Douglass  
Carol Winograd  
Cam Eichar  
Caroline Denicke  
Ellen and Bob Goldman  
Steve Price  
Patrick Walsh  
Joy Betterton  
Starr Taber

Roger Jeanson  
Ginny Turner  
Maureen and Ralph Kalbus  
Suzanne Fogarty  
Andy and Ginny Anderson  
Linda Daniels  
Dee Kordek  
Bonnie Marks  
Alex and Tinka Ross  
George Elias  
Lisa Brow  
Marijane Guy  
Ruth Dell  
Ann Peckenpaugh Becker  
Mardi Leland  
Lindsey McLorg  
Deborah Sanborn  
Mahsati Tsao  
Cynthia Sima  
Kathleen Leones  
Sally Williams  
Alexander B. Vollmer  
Larry Eggan  
Dvera Hadden  
Jane Rostad  
Steve A. Fabes  
Andrew Frankl  
Mark and Carole Friedlander  
William and Diane Mayers

**HONORARY LIFE MEMBERS**  
John Brebner  
James Dunn  
Elisabeth Levy  
Anne Ripley  
Tinka and Alex Ross  
Ken Rowland  
Robert Wilson

**LEGACY CIRCLE**  
Ross Valley Players is honored to recognize the members of our Legacy Circle. Their generosity will ensure the RVP curtain rises for years to come.  
Stephanie and Tom Ahlberg  
Carole and Mark Friedlander  
Ellen and Bob Goldman  
Judith A. Jaslow  
Dee Kordek  
Victor Revenko  
Tinka and Alex Ross  
Georgia F. Sagues



## Come Full Circle with RVP

**Connect with the Legacy Circle and shape the future of Ross Valley Players.**


Georgia F. Sagues has done just that!

**“I’ve enjoyed RVP productions for years. They are wonderful! I encourage everyone to support RVP, including the Legacy Circle.”**

Legacy Circle Members include Ross Valley Players in their estate plans in some way—will, trust, life insurance policy, etc. The Board’s intention is to invest any funds received in a way to produce a stable income stream to benefit RVP for decades.

Georgia has joined board members, volunteers, and season ticket subscribers in this commitment. No need to tell us the amount of your planned estate gift, only that you will be including RVP as a beneficiary or have already done so.

**Contact our Board President, Allan Casalou, at [acasalou@gmail.com](mailto:acasalou@gmail.com) with questions. Join the honor roll of donors displayed in the lobby, right by where Georgia is sitting. Help sustain a creative community asset.**



Drake Terrace

A KISCO COMMUNITY



# ENJOY LIFE FULLY AT **DRAKE TERRACE**



Drake Terrace offers Independent Living, Assisted Living and Memory Care. Our proprietary wellness program, The Art of Living Well® embraces nine dimensions of wellness, supporting a holistic and fulfilling lifestyle. Our full activity calendar includes museum trips, concerts, plays, and lunch outings around the Bay Area.

**CALL 415.491.1935 AND DISCOVER  
THE ART OF LIVING WELL® FOR YOURSELF!**